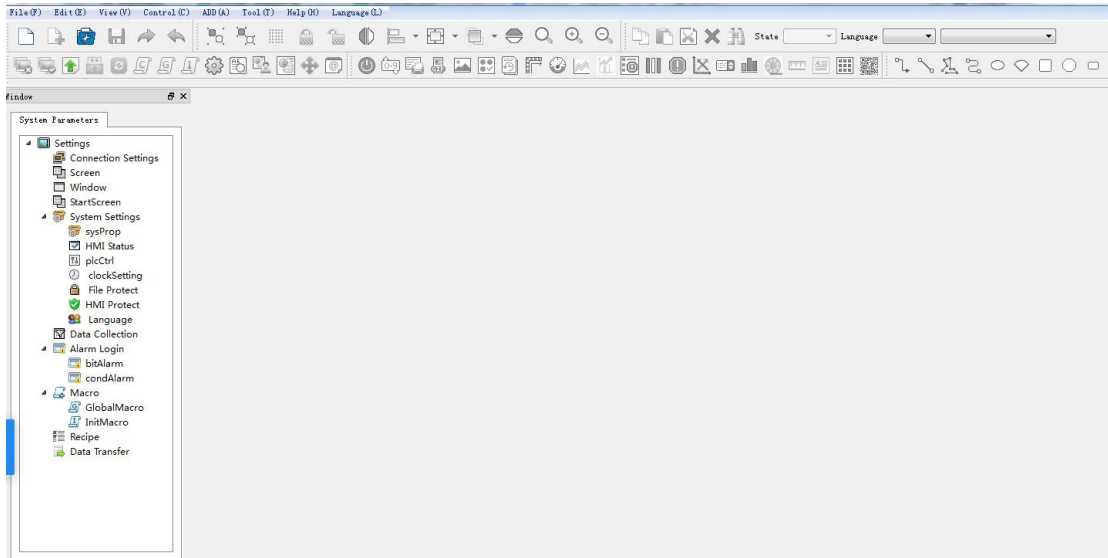


# — . Description PC Configuration Software

## 1. Develop software



PC Software is a tool that users can edit arbitrarily. All application programs are developed based on it. It composes rich controls, which can be arbitrarily combined to achieve the functions that users want :

## 二 . Features Includings :

<p><b>Switch Button</b></p>	<p>Including "Bit Button" "Word Button" "Indicator" "Screen Button" "Function Button" "Polymorphic Button" touch the connected device to monitor the status</p>
<p><b>Numerical Input and Display</b></p>	<p>Including a variety of base input and display, ASCII code input and display, used to display the monitoring address value;Another time display is used to display the real-time time</p>
<p><b>Flow Block</b></p>	<p>An animated graphic that simulates the flow of liquid in a pipe</p>
<p><b>Static</b></p>	<p>A variety of basic shapes, including lines, circles, ellipses,</p>

<b>text/table/scale</b>	rectangles, etc
<b>Image Display and GIF animation</b>	A picture display box that displays one or more pictures
<b>Instrument</b>	Bar chart, meter, ring, showing a value of some state of data
<b>Message Display</b>	Displays messages that be edited by user
<b>Alarm Display</b>	Display the alarm information of the current device (divided into digital alarm and analog alarm), Alarm settings must be configured before using the control
<b>Dynamic Alarm</b>	Used to display the current alarm, which is different from the alarm control is the dynamic alarm bar in the form of text scrolling display the current alarm content
<b>X Y Curve</b>	Real time and dynamic display of data trend of data collector
<b>History Curve</b>	Displays the data saved by the history collector in curvilinear form
<b>Recipe</b>	Create a recipe like menu
<b>Multifunction Button</b>	A switch button, through the button can be very convenient to achieve a variety of functional requirements
<b>Trend Chart</b>	Draw reference curves of multiple data to accurately and intuitively judge the change trend of a certain value in a period of time
<b>Dropdownlist</b>	Used to select the corresponding state function
<b>Data group</b>	To display the data change from register address N to register address N as a curve
<b>Motion trail</b>	Control address data by dragging a scroll block

<b>Qr code</b>	Dynamic generation of QR code, through scanning into the url, payment and other functions
----------------	---

### Extended Function Of Host Configuration Software :

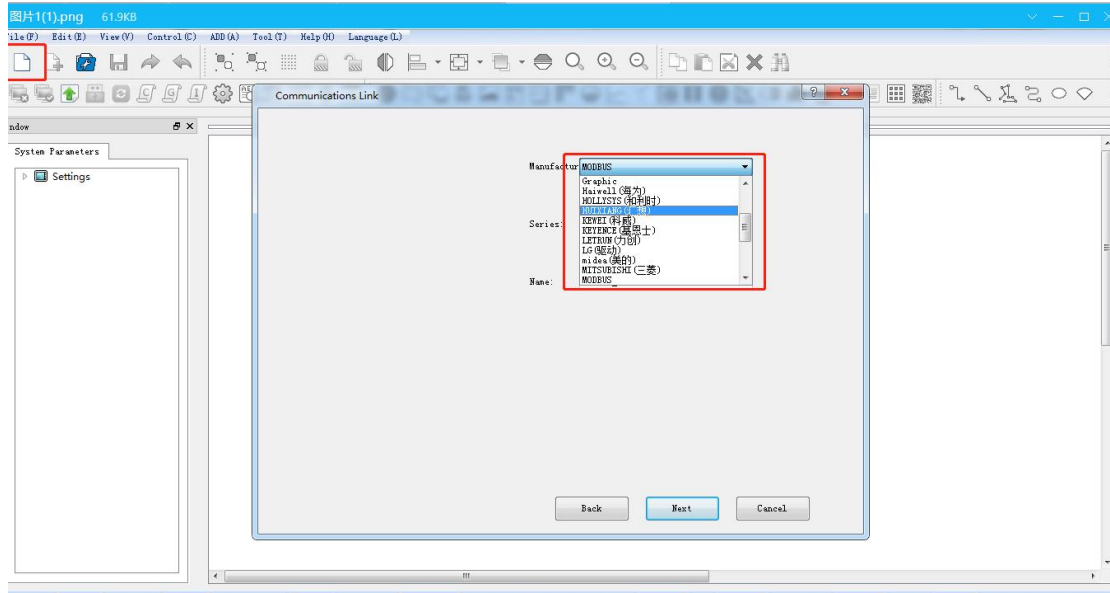
<b>Macro Instruction</b>	C programming language, to achieve a variety of more complex logic or functions
<b>PLC Control</b>	HMI is controlled by PLC
<b>Language</b>	Support for multiple languages
<b>Data Collection</b>	Data acquisition for temperature, pressure, humidity, etc
<b>Data Transmission</b>	Refers to the transmission of data over the same type of address. The transmission mode can be periodic (how many seconds) or triggered
<b>HMI Protection</b>	It is set that HMI can normally use HMI within a certain period of time. If the time exceeds the time specified by the user, HMI will jump to the specified screen previously set by the user. In the specified screen, the user only places the "Panel protection unlock button" under the function button.
<b>File Protection</b>	Whether to enter a password when opening the project
<b>User password Level</b>	Set the user permission and password. Enter the password to access the corresponding permission
<b>Boot Screen</b>	Users can customize the startup Logo screen

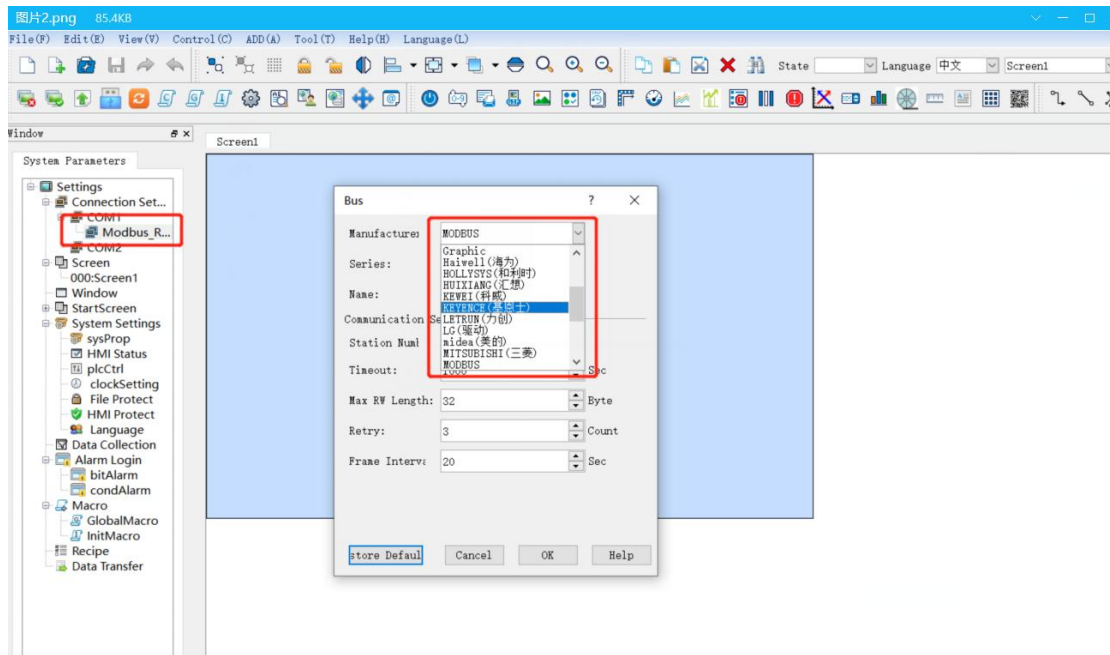
<b>Online Simulation</b>	Online simulation enables you to communicate with relevant devices such as PLC through personal computer (HMI configuration software needs to be installed first) without HMI
<b>Offline Simulation</b>	Before the picture is compiled and downloaded to the HMI device, the offline simulation function of HMISstudio can be used to check the correctness of the configuration picture and the effect display
<b>Supports Multiple Controller Communication Protocols</b>	Suitable for a variety of PLC, inverter, servo controller, SCM control system (Mitsubishi, Panasonic, Omron, Delta, Letter Jie, Fatek, Siemens, Keens, LG, and other major PLC) user operation only need to choose to call directly on the software
<b>Custom Add Gallery</b>	Support custom add gallery, users can according to the need to intercept their favorite picture loaded into the custom gallery to call
<b>Keyboard</b>	Support Chinese and English keyboard input, users can freely switch to use
<b>Gallery</b>	Image library rich, support Png, Jpg, Gif, Bmp and other formats of pictures, vector image library, arbitrary zoom without aliasing
<b>Baud Rate Range</b>	Support serial baud rate range of 1200-230400

### 三 . Protocol Configuration

Users can run MODBUS RTU, Mitsubishi, Siemens, Delta,Xinje and other protocols through the configuration of the upper computer.

Open configuration software and click on new project to select the desired communication protocol in new project. You can also modify the communicate on protocol you need in the project by opening the protocol under COM1 port Settings. The diagram below.





## 四 HMI Software Mouse operation and shortcut keys

The following are several common mouse operations and their purpose in the configuration screen editing software:

- ◎ Left click

Press the left mouse button to click and then release in this document referred to as [click], used when selecting menu, selecting object, selecting tool button, editing screen configuration and confirming Settings.

- ◎ Double-click on the left button

Click the left key twice in quick succession, which is called [double click] in this document, to set the properties of the parts that have been placed, screen properties, window properties, touch screen connection properties, Touch screen setting property Settings, create historical data collection, formula, alarm and other control options, you can double-click the part, then the dialog box to change the Settings.

- ◎ Right click

Right-click an item to open a drop-down menu, or right-click in a blank area to display it

Right-click the menu. You can also cancel the edit screen state, restore the mouse shape.

◎ Drag

Holding down the left button, moving the mouse is referred to in this document as [drag], using the drag action to select multiple parts, move parts, and move the editing window that pops up.

■ Mouse shape

When using HMI configuration screen editing software, the shape of the mouse will vary with different operations of the configuration user.

To distinguish different operation types, convenient for users to operate.

Table 1-1 shows the different mouse shapes that can be used during screen editing:






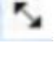

	You can select an object and click the Tools button
	You can paste, you can draw
	Text can be entered
	Objects can be enlarged on a vertical plane
	Objects can be enlarged horizontally
	Objects can be enlarged horizontally and vertically
	You can adjust the direction of the line segment, curve curvature

表1-1 鼠标形状及含义

■ short cut key

The following table 1-2 lists some commonly used shortcut keys, which are convenient for engineering designers to quickly configure the project screen:

CTRL+C	Copy
--------	------

CTRL+V	Paste
CTRL+X	Cut
CTRL+drag	Copy the selected object and move it
SHIFT+Click (CTRL + Click)	Select multiple objects at the same time
← → ↑ ↓	The selected object moves left and right, up and down
ESC	Cancel command operation
DEL	delete

表1-2 快捷键

## 五. Term definition

The following table lists some of the names commonly used in this document to describe the configuration of the project screen.

<b>Project</b>	User application system. The introduction of the concept of engineering is to make complex computer expertise closer to ordinary engineering users. The files generated in the HMI configuration environment are called engineering files, with the suffix *.hs, and can be stored in a place specified by the user.
<b>Object</b>	Operating target and operating environment. Such as Windows, components, data, graphics, etc., are called objects.
<b>Selected object</b>	The mouse clicks a window or object to make it in an operable state, which is called the selected object, the selected object (including the window), also called the current object.



<b>Configuration Software</b>	In the window environment, the object is defined, made and edited, and its state characteristics (properties) parameters are set, which is called configuration.
<b>property</b>	An object's name, type, status, performance, and usage.
<b>Menu</b>	Is a collection of commands that perform a function. For example, the "File" menu command in the system menu is used to process the execution commands related to project files. HMI Software menus are in the form of drop-down menus, drop-down menus can also be divided into multiple levels, each level is called sub-menus
<b>Function Button</b>	A button with a command action, which can be found in the toolbar or in the menu bar
<b>On Status</b>	Toggle an object with a display bit state where the position state is "on"
<b>Off Status</b>	Toggles an object with a display bit state to a state where the place state is "off"
<b>Type</b>	A transition effect of the object from the foreground color to the background color
<b>Site</b>	A memory variable associated with the current object
<b>Link device</b>	The device that communicates with the current project
<b>Control</b>	A collection that has a particular kind of function