

YYAC-3S Thyristor PWM Controller

220V

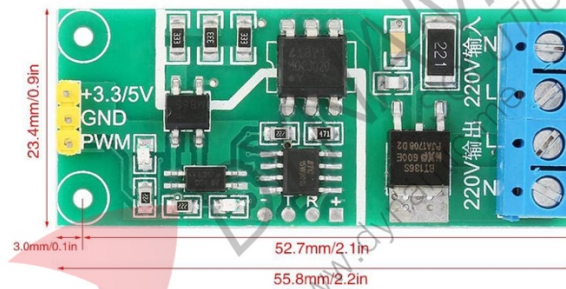


Features:

The **YYAC-3S PWM Controller Module** is a thyristor-based, opto-isolated PWM regulator for 220 V AC loads. It accepts a 3.3–5 V PWM signal to precisely control output voltage from 0 to 220 V at currents up to 3 A. With a compact form factor, wide operating temperature range, and support for multiple load control modes—including dimming, motor speed, and thermostatic regulation—it's perfect for microcontroller-integrated power applications.

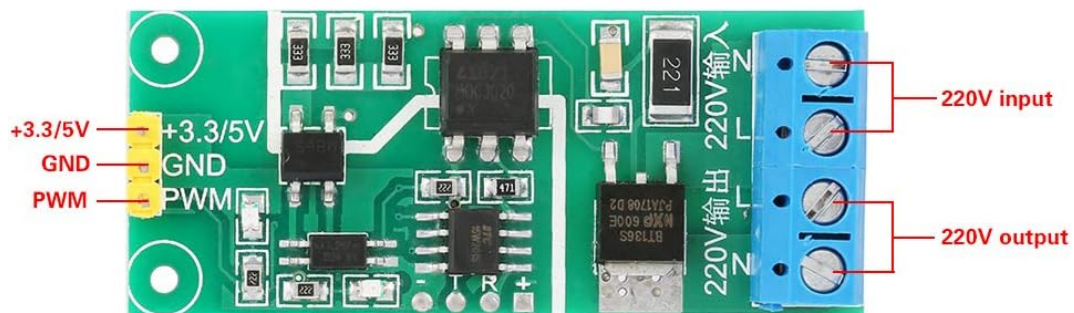
Specifications	
Model	YYAC-3S PWM Controller Module
Control Voltage	Input
Load Working Voltage	Output
Maximum Load Current	3 A (up to 660 W)
PWM Control Frequency	1 Hz–500 Hz
Duty Cycle Range	0–100 %
Operating Temperature	–40 °C to 85 °C
Operating Humidity	0–95 % RH
Isolation	Method
Dimensions	56 × 24 × 21 mm
Use	Light dimming, motor speed control, temperature and voltage regulation

Product Dimensions:



Pinouts:

Pin Name	Type	Description
+3.3V/5V	Input Power	Input power supply for PWM control circuit (3.3–5 V DC)
GND	Input Ground	Common ground for PWM signal and control power
PWM	PWM Input	Control signal input (3.3–5 V PWM)
L (AC IN)	AC Input (Live)	Live AC mains input (220 V AC)
N (AC IN)	AC Input (Neutral)	Neutral AC mains input
L (AC OUT)	AC Output (Live)	Controlled live output to appliance
N (AC OUT)	AC Output (Neutral)	Neutral output to appliance



Product Pictures:

